

Brief Introduction

Tips of glue (The picture is only for reference.)

1. Liquid glue is used to glue large wood parts and other materials.
2. Do not use too much glue in case of longer time to dry. It may also affect the appearance of completed products.



Liquid glue

Tips of assembling

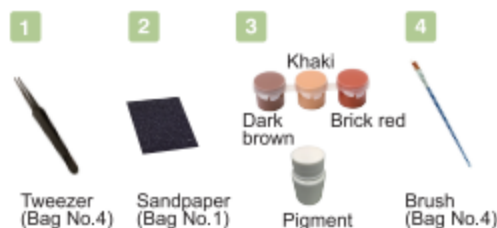
1. Small parts are included. Children must assemble under the guidance of adults in case of swallowing by mistake.
2. Put the remains back to original bags after taking enough dosage in each step till completed. (In case of missing materials)
3. All the dimension in the instruction is shown in millimeter (mm).
4. Find the part you need according to material list and the 1:1 part illustration paper (for wood parts). Check its number and size carefully before assembling.
5. When assembling, note the position of the parts shown in the material list, and take them out for use.

Tips of light bead

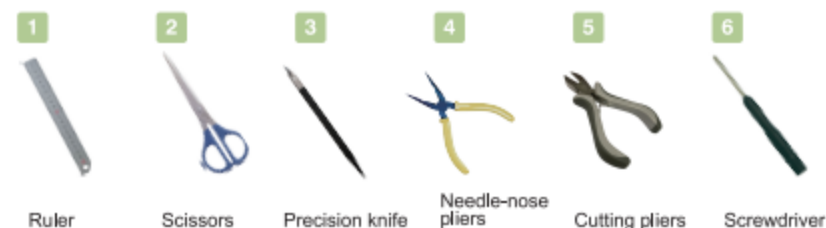
1. Notice: Connect the yellow wire to the anode and white wire to the cathode. (See the figure)
2. In the cell box, the red wire is anode and the black wire is cathode.
3. Test if the light works again after assembling the lampshade and the cell box.



Tools included

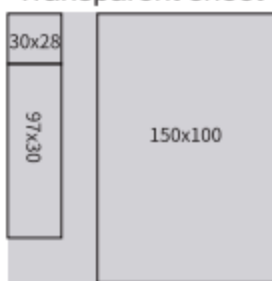


Tools not included

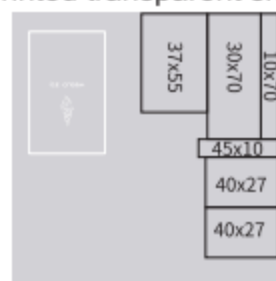


Cutting explanation of transparent sheet (mm)

Transparent sheet

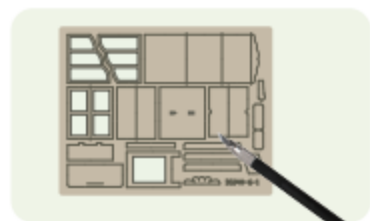


Printed transparent sheet



1. Cut the sheet into specific sizes based on the instruction.

Remove the part properly



Remove the wood part with knife. Polish with sandpaper for preparation. (It's easier to remove parts by cutting the edge front and back.)

Find wood parts based on the part illustration paper

- 1 Find the part illustration paper in the box.

- 2 Compare the part with the 1:1 illustration paper to help find the part required.



Paint the part



Paint the part according to the instruction in advance and dry for preparation. Paint again after dry for better effect. (For example, paint 1-B17 khaki.)

Part number explanation

3-B1 is in Bag No.3, the number of the part is B1. (Only note the part number in the steps.)

Leisure Time



Product name : Honey Ice-cream Shop
Product model : DG148
Size : 225 x 150 x 160mm



Product name : Flowery Sweets & Teas
Product model : DG146
Size : 220 x 149 x 170mm



Product name : Light Music Bar
Product model : DG147
Size : 222 x 159 x 190mm



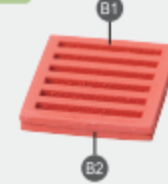
Small Cabinet



Material List

- 1 Wood pieces 7pcs
- 2 Silver metal wire L13mm 1pc (Bag No.4)
- 3 Transparent small bowl 1pc (Bag No.4)
- 4 Papercut K33

1



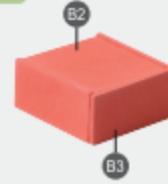
Glue as shown.

2



Glue as shown.

3



Glue as shown.

4



Glue as shown.

5



Clamp the metal wire flat and bend as shown.

6



Glue as shown. Completed.

Rack



Material List

- 1 Wood pieces 6pcs
- 2 Papercut K29

1



Glue as shown, B4 and B6 in top alignment.

2



Glue B5 and B7 in bottom alignment.

3



Glue as shown. Completed.

Checkout Counter



Material List

- 1 Wood pieces 12pcs
- 2 Papercut K27

1



Glue as shown.

2



Glue as shown.

3



Glue as shown, B9 and B10 in the middle.

4



Glue as shown.

5



Glue as shown. Completed.

Shop Front Header



Material List

- 1 Wood pieces 2pcs
- 2 Papercut K36, K37



1



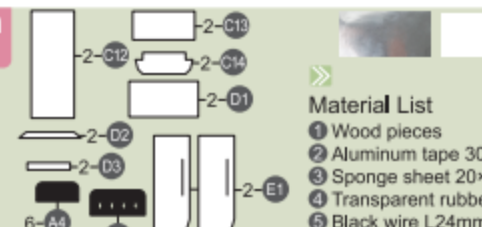
Paint the side of D17 dark brown. Then glue as shown.

2



Glue as shown. Completed.

Ice Cream Machine



Material List

- 1 Wood pieces 8pcs
- 2 Aluminum tape 30×18mm 1pc (Bag No.1)
- 3 Sponge sheet 20×8mm 1pc (Bag No.1)
- 4 Transparent rubber cap 1pc (Bag No.4)
- 5 Black wire L24mm 1pc (Bag No.4)
- 6 Blue-and-yellow ice cream L2mm1pc (Bag No.5)
- 7 Papercut K24, K25
- 8 Black cardstock A4, A7, A11, A12

1 Aluminum tape
Glue as shown.

2 E1
Glue as shown.

3 D3
C14
D2
Glue as shown.

4 D1
C13
Glue as shown.

5 Sponge sheet
K25
Glue in the middle.

6 A12
A11
A7
Glue A12 above A11.
Glue A7 as shown.

7 A4
Glue A4 in the middle as shown.

8 Transparent rubber cap
Cut the rubber cap into pieces of 1.5mm wide. Glue as shown.

9 4
8
Ax3pcs
Cut the black wire and remove their rubber as shown. Glue as shown.

10 Cut a blue-and-yellow ice cream of 2mm thick and glue as shown. Completed.

Front Counter

Material List

- 1 Wood pieces 7pcs
- 2 White ice cream 1pc (Bag No.5)
- 3 Papercut M9

1 C56
C57
C58
Glue as shown.

2 M9
Glue as shown.

3 C56
C57
Glue as shown.

4 White ice cream
C51
Glue as shown. Completed.

Menu Board

Material List

- 1 Wood pieces 4pcs
- 2 Papercut M22

1 B25
M22
Glue as shown.

2 B24
Glue as shown.

3 B26
B24
C24
Glue as shown. Completed.

Storage Cabinet

Material List

- 1 Wood pieces 10pcs
- 2 Transparent sheet 30x28mm 1pc
- 3 Silver metal wire L26mm 1pc (Bag No.4)
- 4 Cup 2pcs (Bag No.4)
- 5 Translucent jar 2pcs (Bag No.5)
- 6 Papercut K23

1 B18
B21
B19
Glue as shown.

2 B20
Glue as shown.

3 B16
B22
Glue in the middle, B22 in back alignment.

4 Translucent jar
K23
A
Glue as shown.

5 Cup
Translucent jar
A
Glue as shown.

6 14
30
x2pcs
Cut the transparent sheet as shown. (Peel off the protective film for use.)

7 Roof 3
Roof 2
Roof 1
Roof 4
Glue the wire inside along the red arrow. Glue Roof 3 onto the left reference line, the bottom of Roof 1 and Roof 3 aligned.

8 Roof 4
Glue as shown. (The wire should pass through the hole.)

9 Brick red
Roof tile
M21
Roof tile (Bag No.1)
Note the trend of the ridge

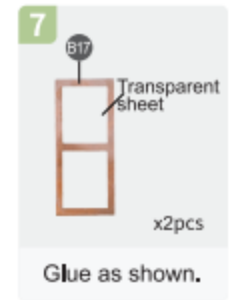
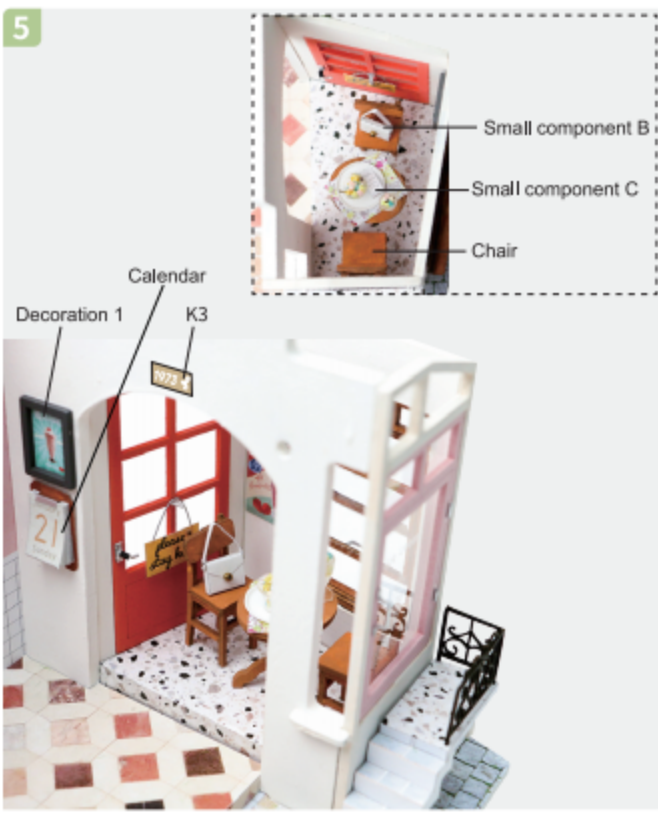
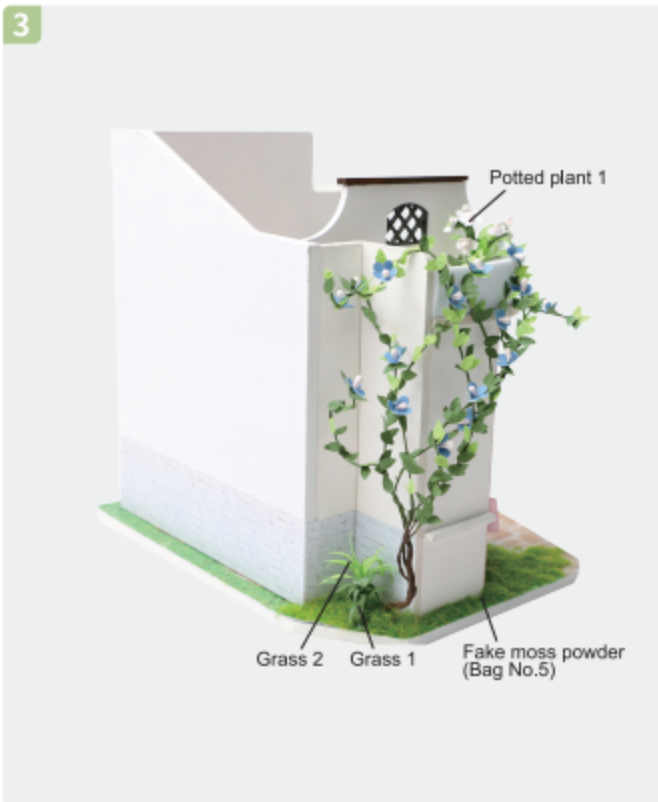
Paint the roof tile brick red. Cut it based on M21 and glue as shown.

10 20
22
a
b
c
115
Cut the white heat-shrink tube and put onto wires. Then glue as shown.

11 Put the cells in. (Don't mix up the electrodes.)
Install the screws.

Remove 12mm rubber off wires of the cell box.
Cut two 15mm heat-shrink tubes and put onto wires as shown.

12 Connect the light to the cell box. Connect yellow to red, white to black. Put all wires away and insert the cell box as shown. (For the convenience of changing cells, don't fix with glue.)



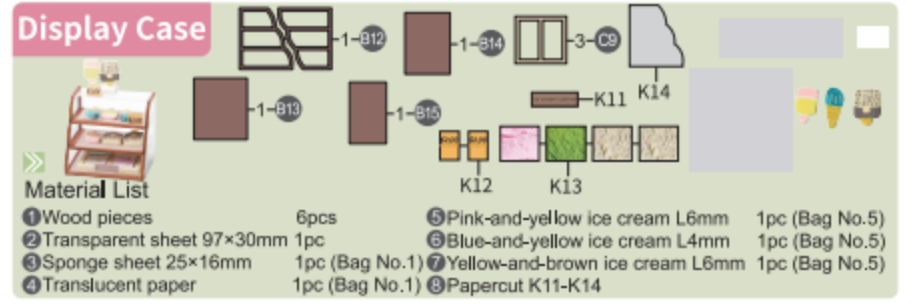
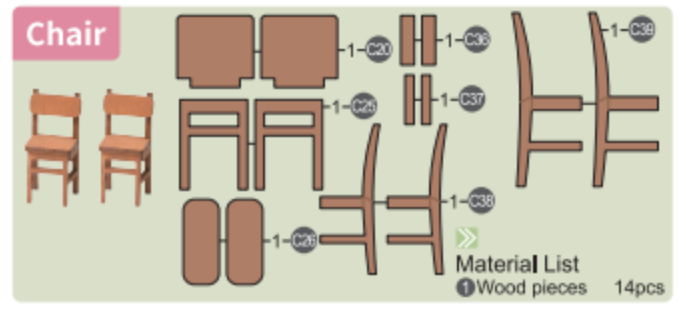
Glue as shown.



Cut the silver metal wire. Clamp it flat and bend as shown.



Glue as shown.



1 Cut the transparent sheet as shown.

2 Cut the transparent sheet based on K14 and glue as shown.

3 Glue as shown.

4 Mark at the dotted line with knife and fold. Glue as shown.

5 Cut the sponge sheet as shown.

6 Glue as shown.

7 Cut the translucent paper as shown.

8 Glue as shown.

9 Cut ice creams into pieces of 2mm thick as shown.

10 Glue as shown.

11 Glue as shown.

12 Glue as shown. Completed.

Window

Material List

1 Wood pieces	14pcs
2 Printed transparent sheet	1pc
3 Silver metal wire L54mm	1pc (Bag No.4)
4 Black wire L30mm	1pc (Bag No.4)
5 Aluminum tape 50x4mm	1pc (Bag No.1)
6 Black heat-shrink tube L4mm	1pc (Bag No.4)
7 Papercut K7	

1 Cut the printed transparent sheet as shown.

2 Cut along the white line.

3 Back view Front view. Glue it onto the back side of C16.

4 Cut and bend the silver metal wire as shown.

5 Front view. Glue as shown.

6 Window 1. Glue as shown. Completed.

7 Back view. Glue as shown.

8 Cut and bend the silver metal wire as shown.

9 Cut the black heat-shrink tube as shown. Put onto the metal wire and glue.

10 Front view Back view Hanging sign. Remove the rubber off the black wire. Bend and glue as shown.

11 Front view. Glue as shown.

12 Cut the aluminum tape as shown. Fold and glue as shown.

13 Back view. Glue as shown.

D Decoration 5, Storage jar 3, Storage jar 2, Fastener (Bag No.5), Basket, Shelf.

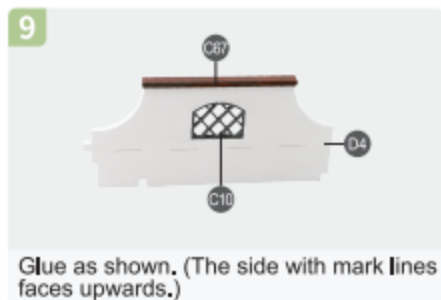
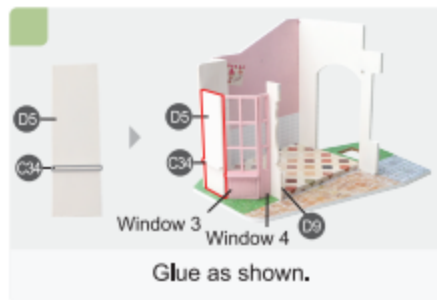
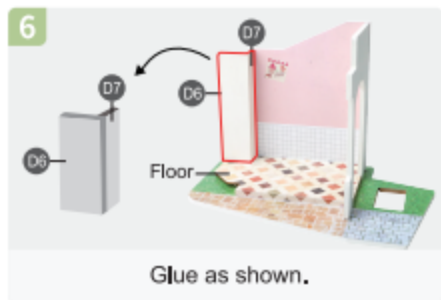
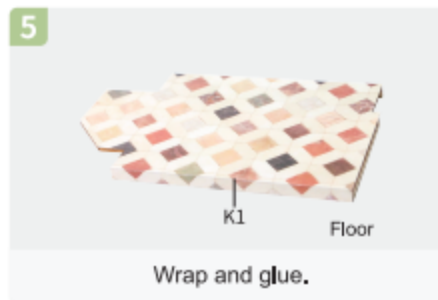
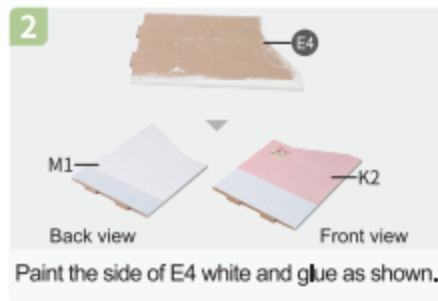
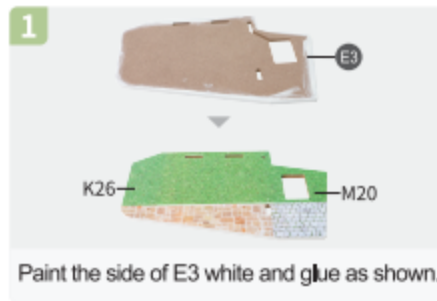
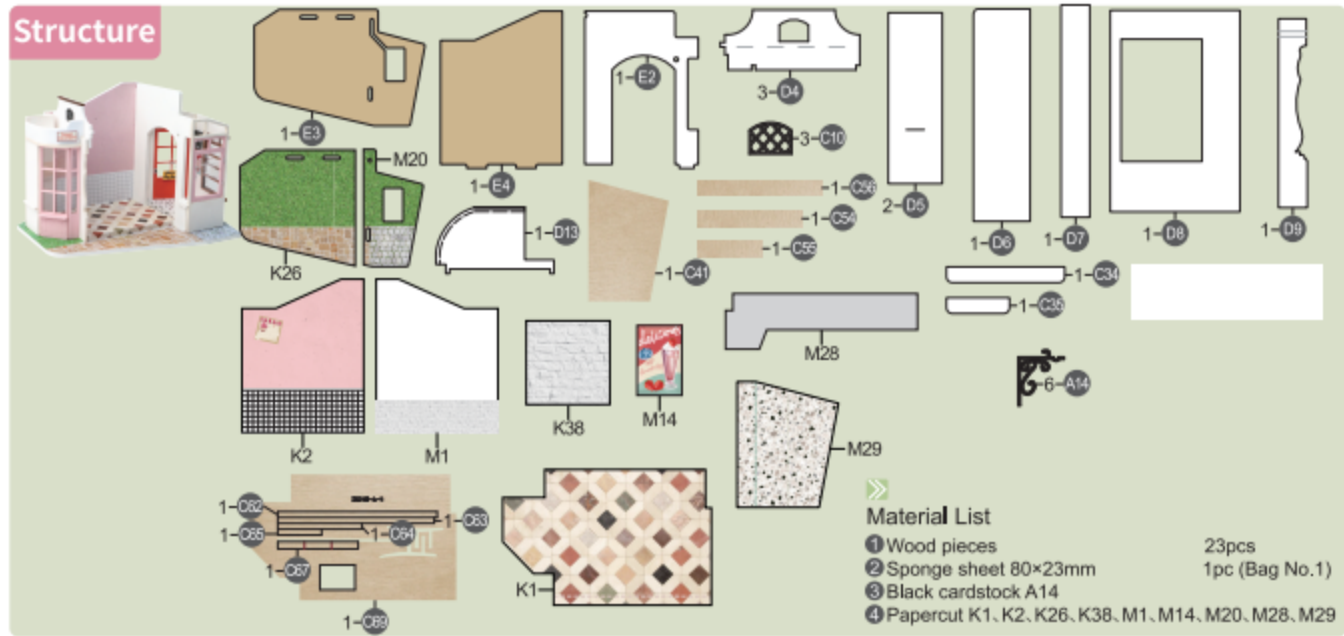
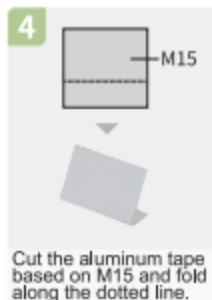
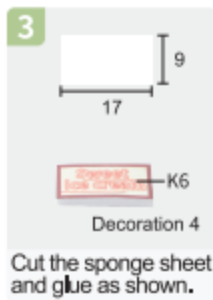
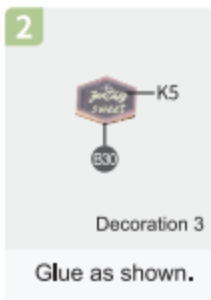
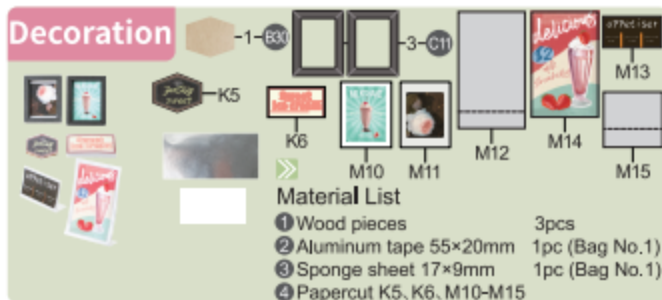
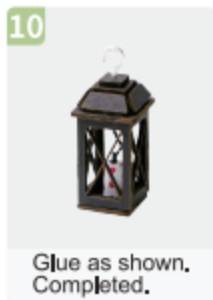
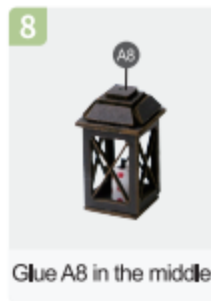
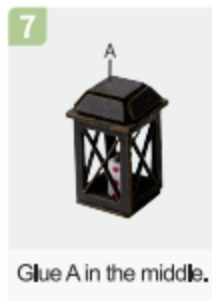
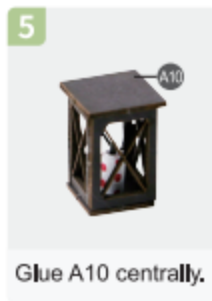
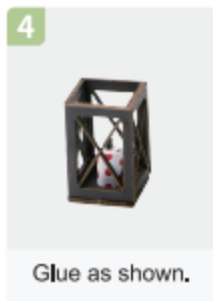
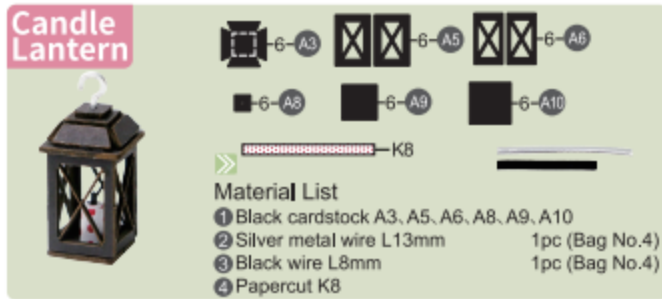
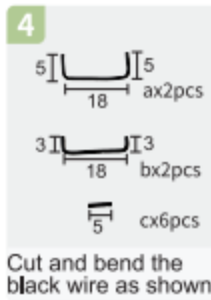
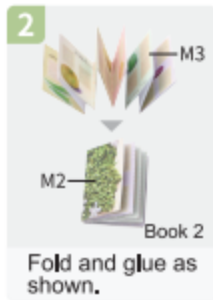
E Storage jar 1, Rack, M18, Knife.

F Display case, Cash register, Checkout counter.

Sequence of Assembly

1 Trunk. Twine the trunk and glue as shown.

2 Light green leaf (Bag No.1), Dark green leaf (Bag No.1), Pink stamen (Bag No.5), Blue flower (Bag No.1). Glue some flowers and leaves as shown.



2

30
x6pcs
Green stem

Cut the stem and glue as shown.

3

30
50

Cut the dark green paper as shown.

4

Wrap and glue.

5

Reddish brown flowerpot

Glue as shown and adjust the shape. Completed.

Bouquet

Material List

- 1 Purple stamen 2pcs (Bag No.5)
- 2 Green stem L120mm 1pc (Bag No.4)
- 3 Papercut M19

1

30
x4pcs
Purple stamen
M19

Cut the stem and stamen as shown. Glue as shown.

2

Glue as shown. Completed.

Plant

30
x4pcs
M24

Material List

- 1 Green stamen 6pcs (Bag No.5)
- 2 White flower 24pcs (Bag No.1)
- 3 Papercut M24

1

Two white flowers
x12pcs

Cut the stamen in the middle and insert it into the flower. Fix with glue.

2

Glue the bottom together.

3

M24
Plant 1

Wrap and glue. Adjust the shape as shown.

4

M24
Plant 2

Glue as shown and adjust the shape. Completed.

Trunk

Material List

- 1 Green stem 2pcs (Bag No.4)

1

120
140
160
200
a
bx2
cx2
dx2

Cut the stem as shown.

2

Twine as shown and adjust the shape.

3

40

Paint the bottom dark brown as shown.

Knife

1-B27
K28

Material List

- 1 Wood pieces 1pc
- 2 Aluminum tape 10×10mm 1pc (Bag No.1)
- 3 Black wire L20mm 1pc (Bag No.4)
- 4 Papercut K28

1

K28

Cut the aluminum tape based on K28.

2

B27

Glue as shown.

3

8
12
A
B
I3

Remove the rubber off the black wire. Cut and bend as shown.

4

Small golden bead

Glue as shown. Completed.

Dessert

Material List

- 1 Dessert cup 1pc (Bag No.4)
- 2 Transparent bowl 1pc (Bag No.4)
- 3 White tray 1pc (Bag No.4)
- 4 Silver metal wire L10mm 1pc (Bag No.4)
- 5 Papercut K32

4

A

Glue as shown.

5

B

Glue as shown. Completed.

Storage Jar

Material List

- 1 Short frosted jar 2pcs (Bag No.5)
- 2 Transparent tube 2pcs (Bag No.4)
- 3 Transparent jar 1pc (Bag No.4)
- 4 Pink-and-yellow ice cream L2mm 1pc (Bag No.5)
- 5 Blue-and-yellow ice cream L2mm 1pc (Bag No.5)
- 6 Yellow-and-brown ice cream L2mm 1pc (Bag No.5)
- 7 Papercut K15-K22

K18
K19
K20
K21
K22
K15
K16
K17

Short frosted jar

Insert K18 into the jar and glue.

2

K17
K16
K19
K20
K22

Short frosted jar
Storage jar 1

Glue as shown.

3

Transparent jar
Storage jar 2

Glue as shown.

4

K15
Transparent tube

Glue as shown.

5

Cut ice creams into pieces and put them into the tube.

6

K15
K21
K15
K21

Storage jar 3

Glue as shown.

Cash Register

K30
K31
K32

Material List

- 1 Cash register 1pc (Bag No.5)
- 2 White wire L35mm 1pc (Bag No.4)
- 3 Sponge sheet 10×20mm 1pc (Bag No.1)
- 4 Papercut K30-K32

1

K30
Cash register

Glue as shown.

2

K31
10
10
3
10

Cut the sponge sheet as shown.

3

A

Glue as shown.

4

5
B

Bend the white wire as shown.

5

K32
A
B

Glue as shown. Completed.

Bag

1-C47
K34
K35

Material List

- 1 Wood pieces 1pc
- 2 White wire L16mm 1pc (Bag No.4)
- 3 Small golden bead 1pc (Bag No.5)
- 4 Papercut K34, K35

1

K34
C47

Fold and glue as shown.

2

8

Remove the rubber off the white wire. Then bend as shown.

3

K35

Glue as shown.

4

Small golden bead

Glue as shown. Completed.

Dessert

Material List

- 1 Dessert cup 1pc (Bag No.4)
- 2 Transparent bowl 1pc (Bag No.4)
- 3 White tray 1pc (Bag No.4)
- 4 Silver metal wire L10mm 1pc (Bag No.4)
- 5 Papercut K32

1

Cut the rest of ice cream polymer clay into pieces.

2

Dessert cup
Transparent bowl

Glue as shown.

3

10

Cut a silver metal wire of L10mm. Put it into the bowl and glue as shown.

4

K32
White tray

Trim the edge of the tray and glue as shown. Completed.

Pipe

Material List

- 1 Coppery metal wire 1pc (Bag No.4)
- 2 Silver metal wire L12mm 1pc (Bag No.4)
- 3 Coppery eyelet 1pc (Bag No.5)

1

110
15
I10

Bend the coppery metal wire as shown.

2

Coppery eyelet

Glue as shown.

3

6
2
Ax2

Cut the silver metal wire as shown. Clamp it flat and bend.

4

Light

Material List

① Yellow wire	2pcs (Bag No.4)
② White wire	2pcs (Bag No.4)
③ Light bead	2pcs (Bag No.4)
④ Copper eyelet	2pcs (Bag No.5)
⑤ White heat-shrink tube L46mm	1pc (Bag No.4)
⑥ Black heat-shrink tube L20mm	1pc (Bag No.4)
⑦ Plate-shaped lampshade	1pc (Bag No.4)
⑧ Bowl-shaped lampshade	1pc (Bag No.4)

Glue as shown. Completed.

1

Cut off the light pin as shown.

2

Remove 12mm rubber off wires in both ends and wind them separately on the light. (Notice the anode and the cathode.)

Basket

Material List

① Wood pieces	2pcs
② Papercut K9, K10	

Wrap the side with K9, K10. Glue them in bottom alignment. Completed.

1

Wrap the side with K9, K10. Glue them in bottom alignment. Completed.

Grass

Material List

① Dark green paper 60×50mm	1pc (Bag No.1)
② Light green paper 90×90mm	1pc (Bag No.1)

1

Cut the dark green paper as shown. Roll and glue. Adjust the shape.

3

Test if the light works properly with the coil. Don't mix up the electrodes.

4

Cut the heat-shrink tube as shown and put onto wires. Heat tubes to shrink.

5

Cut off the most raised part of the plate-shaped lampshade and trim the rest part as shown.

6

Glue as shown.

7

Cut the white heat-shrink tube and put onto wires. Glue to complete.

8

Cut the white heat-shrink tube and glue as shown.

2

Cut the dark green paper as shown. Roll and glue. Adjust the shape.

Succulent Plant

Material List

① Green stamen	5pcs (Bag No.5)
② Burlwood flowerpot	1pc (Bag No.5)

1

Fold stamens in the middle. Insert into the flowerpot and glue.

9

Punch a hole in the middle of the bowl-shaped lampshade and trim as shown.

10

Glue as shown.

11

Cut the white heat-shrink tube and put onto wires. Glue to complete.

Roof

Material List

① Wood pieces	5pcs
② Transparent sheet 150×100mm	1pc (Bag No.1)
③ Black wire L116mm	1pc (Bag No.4)

2

Trim as shown. Completed.

Potted Plant 1

Material List

① Light green paper 50×30mm	1pc (Bag No.1)
② Pink stamen	4pcs (Bag No.5)
③ Green stem L210mm	1pc (Bag No.4)
④ Reddish brown flowerpot	1pc (Bag No.5)
⑤ White flower	7pcs (Bag No.1)
⑥ Light green leaf	5pcs (Bag No.1)
⑦ Dark green leaf	5pcs (Bag No.1)

1

Cut the light green paper as shown.

2

Cut the stamen and glue as shown.

1

Glue C31, C32, C33 onto the transparent sheet as shown.

2

Cut as shown.

3

Cut as shown.

4

Cut as shown.

5

Glue as shown.

6

Glue C66 onto the edge of C42.

3

Cut the stem and glue as shown.

4

Wrap and glue as shown.

5

Glue as shown and adjust the shape. Completed.

Potted Plant 2

Material List

① Dark green paper 60×50mm	1pc (Bag No.1)
② Reddish brown flowerpot	2pcs (Bag No.5)

1

Cut the dark green paper as shown.

7

Cut the black wire as shown.

8

Glue as shown.

9

Cut the black wire as shown.

10

Bend as shown.

11

Glue as shown.

12

Glue as shown. Completed.

2

Roll and glue.

3

Glue as shown.

4

Adjust the shape as shown. Complete 2 pieces in total.

Potted Plant 3

Material List

① Dark green paper 50×30mm	1pc (Bag No.1)
② Blue flower	18pcs (Bag No.1)
③ Green stem L180mm	1pc (Bag No.4)
④ Reddish brown flowerpot	1pc (Bag No.5)

1

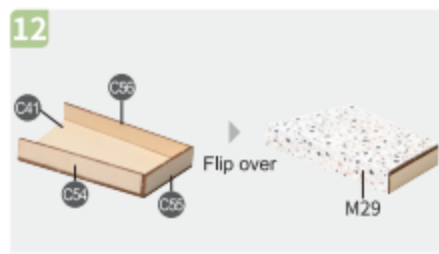
Glue three flowers and adjust the shape as shown.



Glue as shown.



Cut the sponge sheet based on M28 and glue as shown.



Glue as shown.



Front view

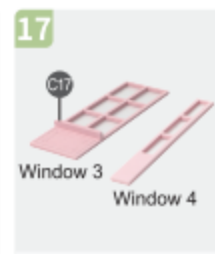
Glue as shown.



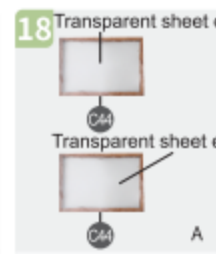
Glue to complete.



Glue as shown.



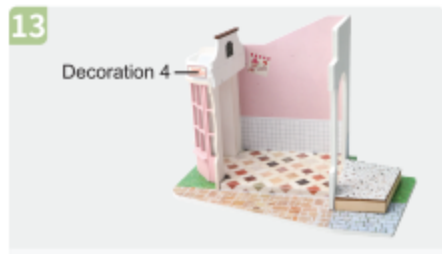
Glue as shown.



Glue as shown.



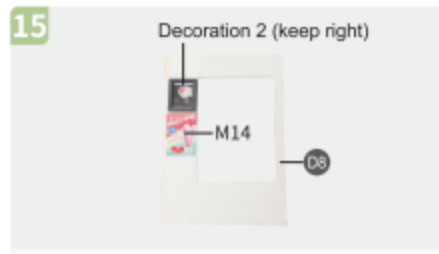
Glue d onto the back side of C43.



Glue as shown.



Glue as shown.



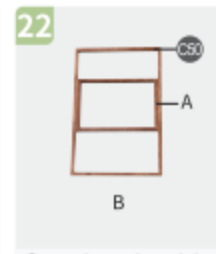
Glue as shown.



Glue A onto the front side as shown.



Glue C51, C52, C53 in back alignment.



Glue the other A in the middle of C50.



Glue B onto the back side.



Cut and bend the silver metal wire as shown.



Glue the handle onto the front side. Completed.



Glue as shown.



Glue as shown.



Glue the stair in right alignment. Completed.

Stair

Material List
 1 Wood pieces 12pcs
 2 Black cardstock A1, A2
 3 Papercut M25-M27



Glue as shown.

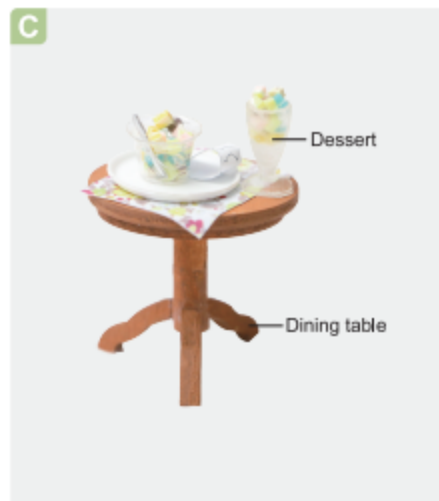
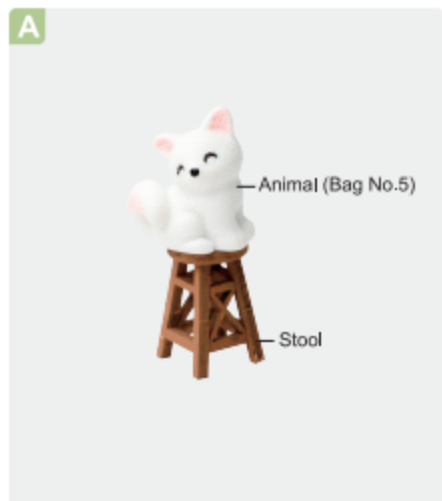


Glue as shown.

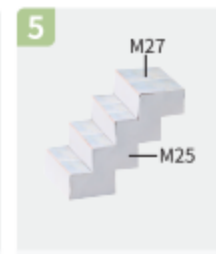


Glue as shown.

Small Components



Glue as shown.



Glue as shown.



Glue as shown.



Glue as shown. Completed.

Calendar

Material List
 1 Aluminum tape 8x8mm 1pc (Bag No.1)
 2 Papercut K41, M23



Fold and glue.



Wrap the side with the 8x8mm aluminum tape and glue.



Glue as shown. Completed.

Bookrack

Material List
 1 Wood pieces 2pcs
 2 Black wire L134mm 1pc (Bag No.4)
 3 Black cardstock A13
 4 Papercut M2-M8